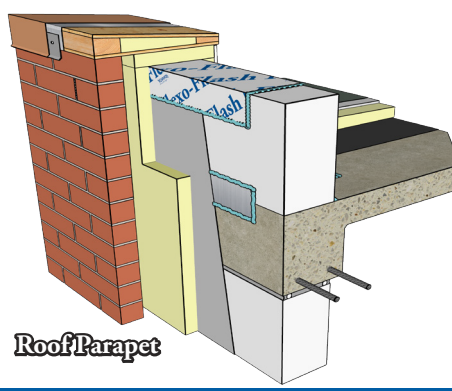
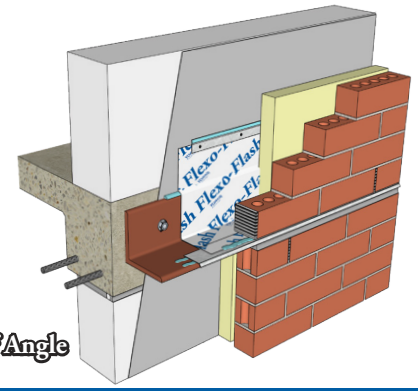


Through-Wall Flashing



Roof Parapet



Shelf Angle

# Flexo-Flash™ Installation Instructions

## Butyl Drainage Plane Flashing

### Self-Adhering Through-Wall-Flashing

1. Install membrane on a clean, dry, and smooth substrate.
2. Install where indicated, specified, or required following the manufacturer's written instructions and as follows.
3. Overlap end joints a minimum of four inches, and seal the leading edge with York's Universeal US-100 sealant at lap joint locations.
4. Seal all terminations, detailing, edges, and protrusions with York's Universeal US-100.
5. Membrane must be held back 1" from the face of the veneer and sealed with York's US-100 sealant.
6. Install the membrane using a hard roller and roll the membrane with constant, firm pressure to ensure uniform contact with the substrate.
7. When installing the membrane at a 90° or greater angle, prebend the membrane and roll the crease before removing the release liner and installation.
8. Confirm compatibility when installing the membrane over an air barrier, sealants, or below grade waterproofing and those items must be fully cured.