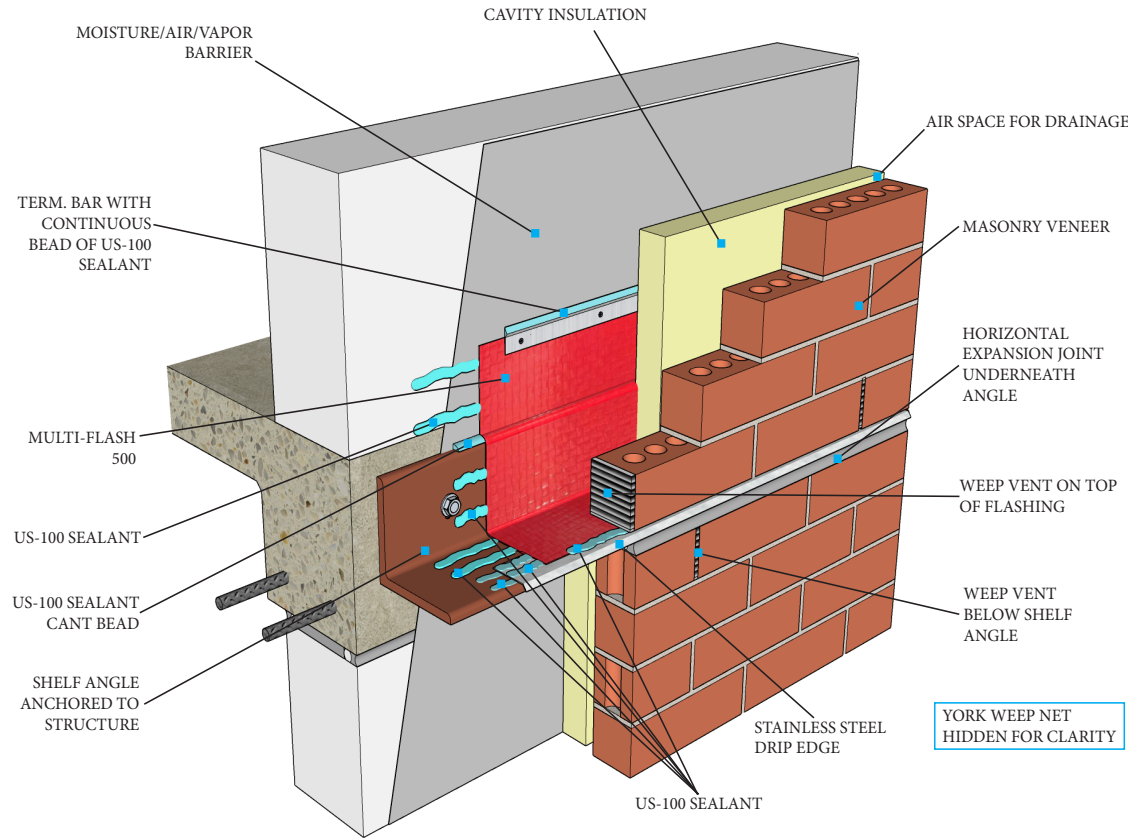
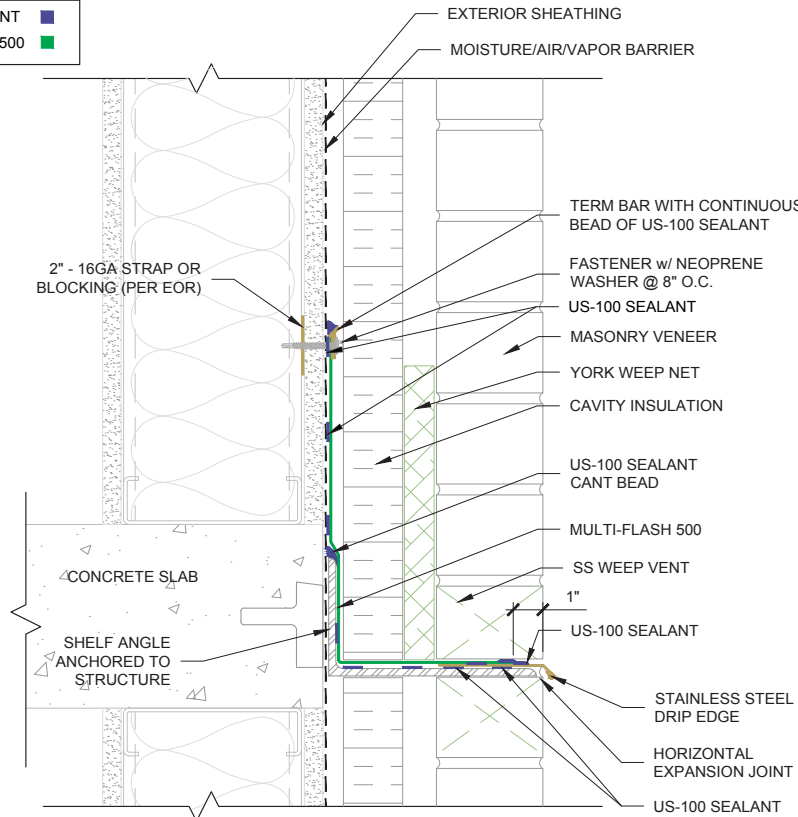


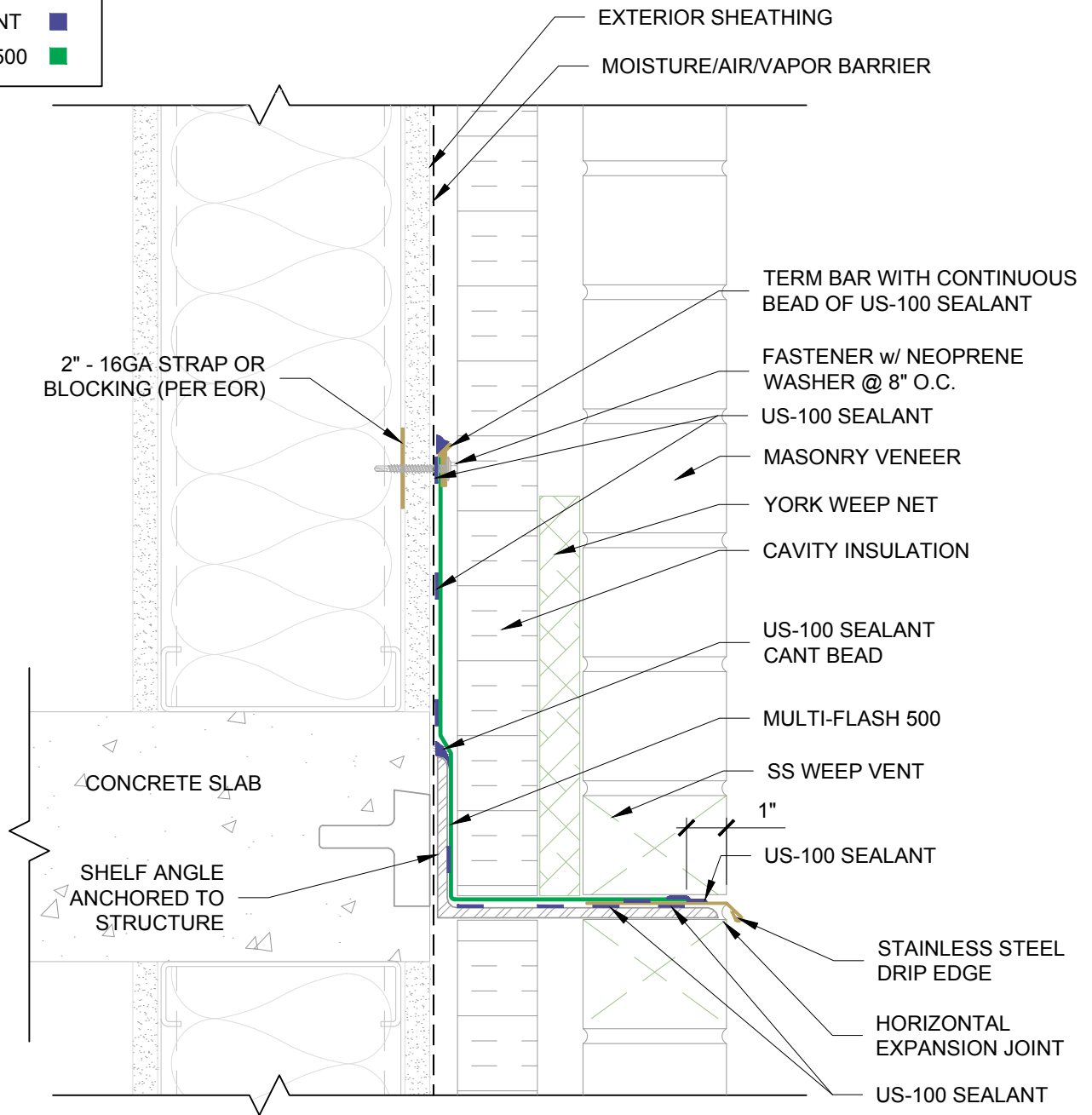
Multi-Flash 500 Shelf Angle Details 2D and 3D

© YORK MANUFACTURING INC.
Reference: MF500-SA-wDE

KEY	
US-100 SEALANT	■
MULTI-FLASH 500	■



KEY	
US-100 SEALANT	■
MULTI-FLASH 500	■



1

SHELF ANGLE DETAIL MULTI-FLASH 500

3"= 1'-0"

NOTE: ENGINEER OF RECORD (EOR) TO REVIEW AND SPECIFY FASTENER TYPE AND FASTENER SPACING FOR TERMINATION BAR, AND STRAPPING OR BLOCKING FOR ANCHORING OF TERMINATION BAR

SHELF ANGLE WITH DRIP EDGE DETAIL - MULTI-FLASH 500



DRAWN BY:
S. Wetmore

DATE:
5/13/2025

DRAWING NAME:
MF500-SA-wDE-2D

Design team is responsible for design application of York Flashings products and accessories. All products should be used in compliance with local building codes and international codes or standards. York provides this detail as guidance only and accepts no liability for the use or duplication of this detail. The design team is responsible for the design and, at their discretion, should determine if the recommended product application is suited for the project and performance desired. This detail is subject to modification at the manufacturer's discretion without notice. For the most recent version, please visit www.yorkflashings.com.



NOTE: DESIGN TEAM IS RESPONSIBLE FOR DESIGN APPLICATION OF YORK FLASHINGS PRODUCTS AND ACCESSORIES. ALL PRODUCTS SHOULD BE USED IN COMPLIANCE WITH LOCAL BUILDING CODES AND INTERNATIONAL CODES OR STANDARDS. YORK PROVIDES THIS DETAIL AS GUIDANCE ONLY AND ACCEPTS NO LIABILITY FOR THE USE OR DUPLICATION OF THIS DETAIL. THE DESIGN TEAM IS RESPONSIBLE FOR THE DESIGN AND, AT THEIR DISCRETION, SHOULD DETERMINE IF THE RECOMMENDED PRODUCT APPLICATION IS SUITED FOR THE PROJECT AND PERFORMANCE DESIRED. THIS DETAIL IS SUBJECT TO MODIFICATION AT THE MANUFACTURER'S DISCRETION WITHOUT NOTICE. FOR THE MOST RECENT VERSION, PLEASE VISIT WWW.YORKFLASHINGS.COM