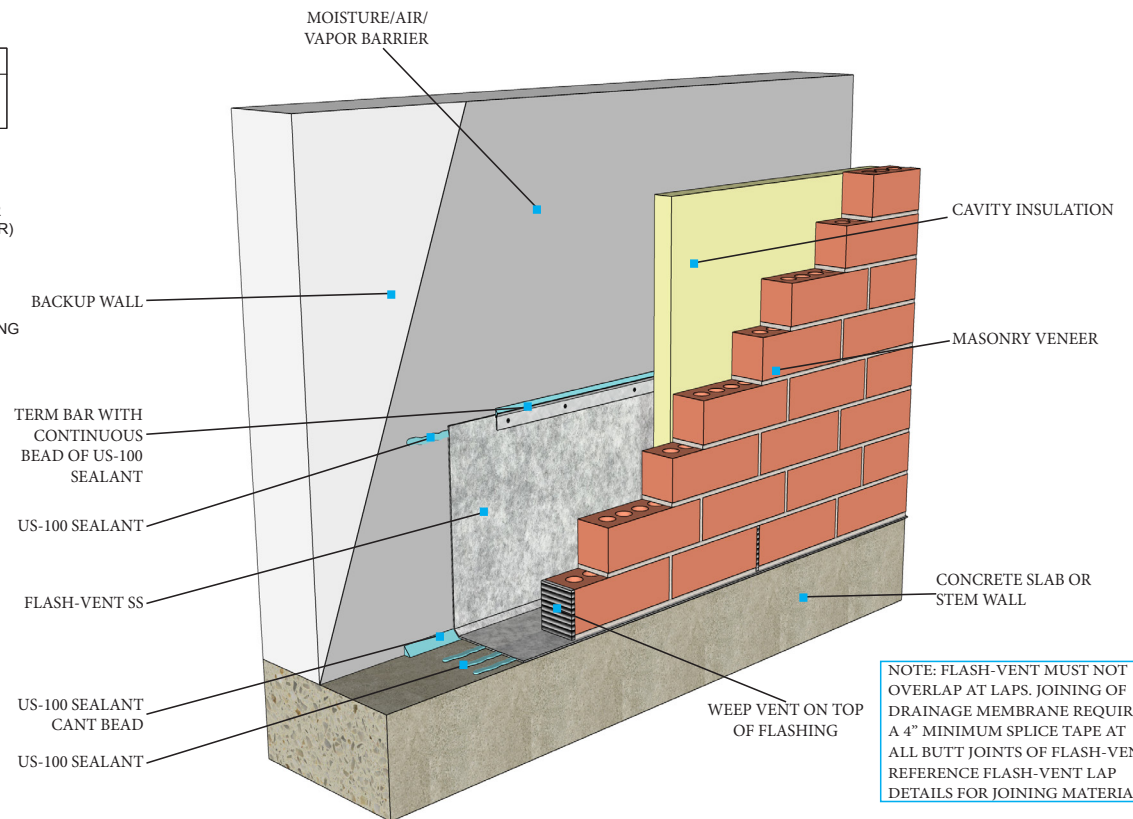
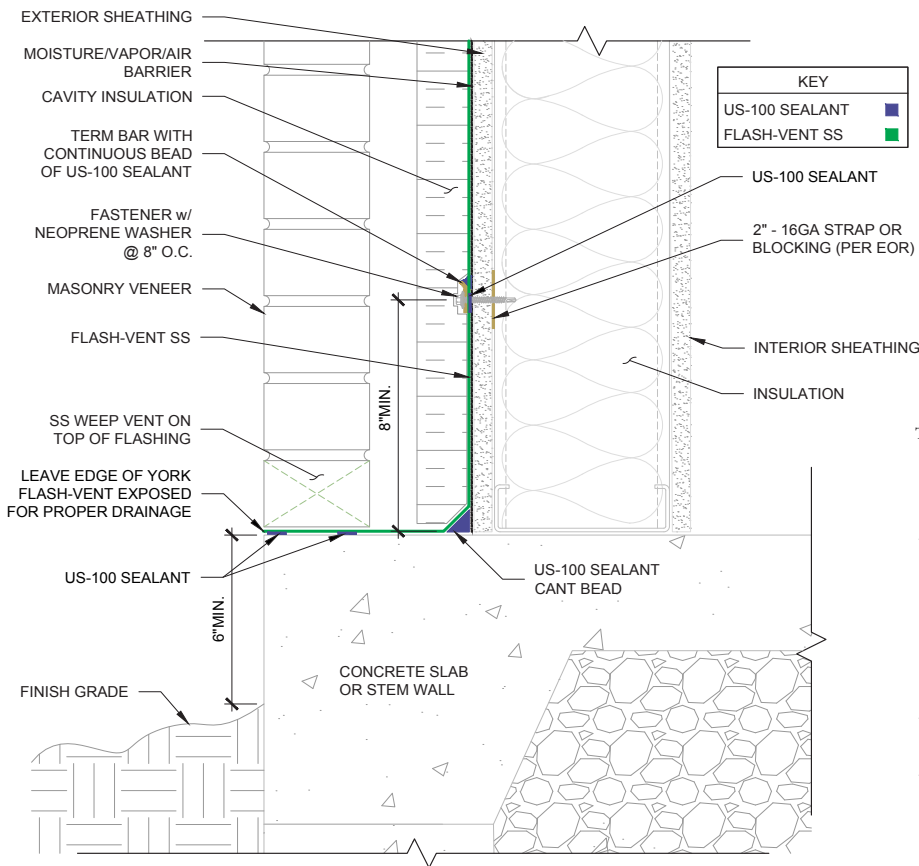


Your Flashing Authority

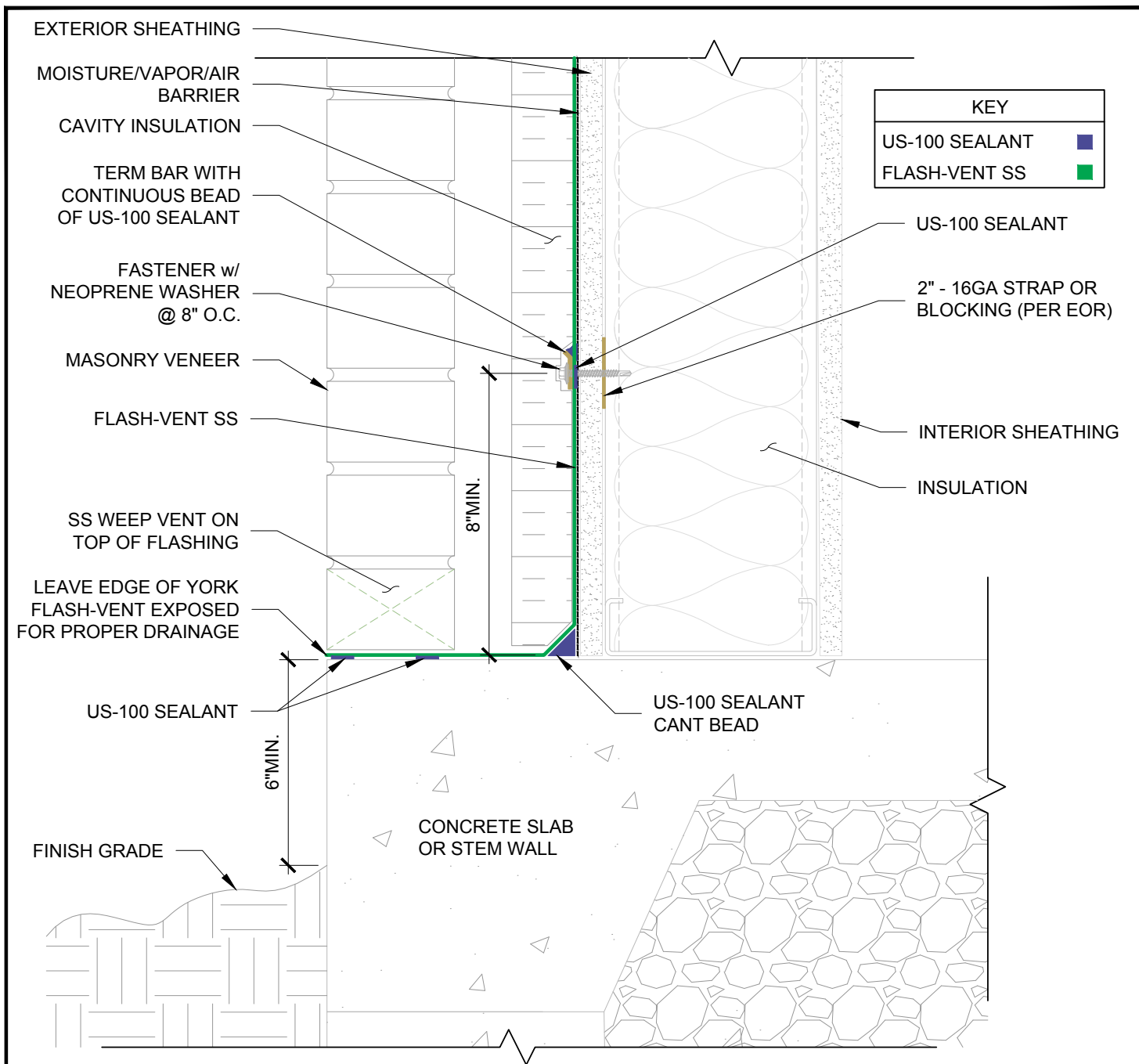
## Flash-Vent Stainless Steel Base Of Wall Through Wall

### Flashing Details 2D and 3D

© YORK MANUFACTURING INC.  
Reference: FLVSS-TWF-PW



NOTE: FLASH-VENT MUST NOT OVERLAP AT LAPS. JOINING OF DRAINAGE MEMBRANE REQUIRES A 4" MINIMUM SPLICE TAPE AT ALL BUTT JOINTS OF FLASH-VENT. REFERENCE FLASH-VENT LAP DETAILS FOR JOINING MATERIALS.



1

**BASE OF WALL TWF FLASH-VENT STAINLESS STEEL**

3"= 1'-0"

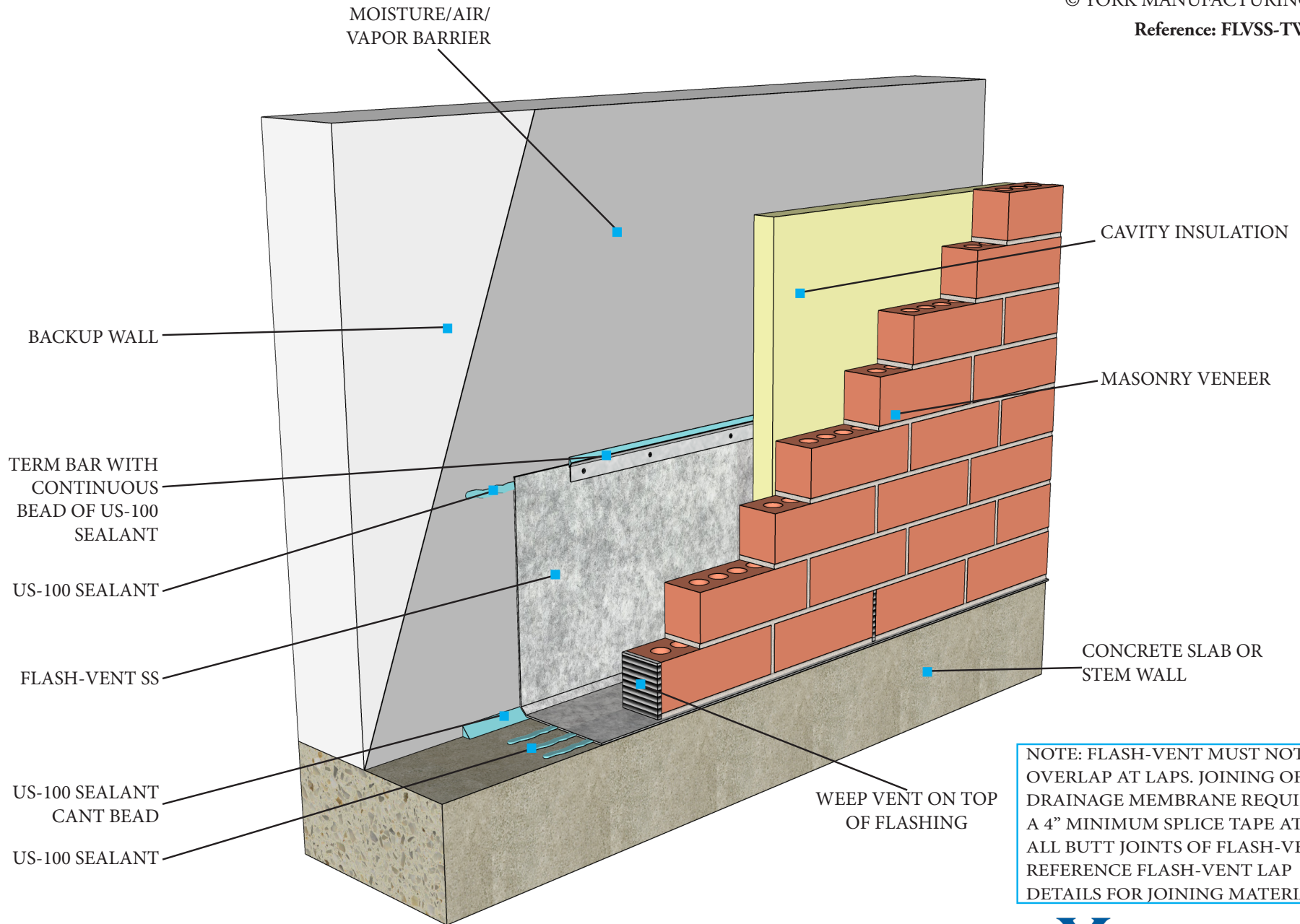
NOTE: FLASH-VENT MUST NOT OVERLAP AT LAPS. JOINING OF DRAINAGE MEMBRANE REQUIRES A 4" MINIMUM SPLICE TAPE AT ALL BUTT JOINTS OF FLASH-VENT. REFERENCE FLASH-VENT LAP DETAILS FOR JOINING OF MATERIALS.

**THROUGH WALL FLASHING  
FLASH-VENT SS**

Design team is responsible for design application of York Flashings products and accessories. All products should be used in compliance with local building codes and international codes or standards. York provides this detail as guidance only and accepts no liability for the use or duplication of this detail. The design team is responsible for the design and, at their discretion, should determine if the recommended product application is suited for the project and performance desired. This detail is subject to modification at the manufacturer's discretion without notice. For the most recent version, please visit [www.yorkflashings.com](http://www.yorkflashings.com).



DRAWN BY: M. Payne	DATE: 10/29/2025
DRAWING NAME: FLVSS-TWF-PW	



NOTE: FLASH-VENT MUST NOT OVERLAP AT LAPS. JOINING OF DRAINAGE MEMBRANE REQUIRES A 4" MINIMUM SPLICE TAPE AT ALL BUTT JOINTS OF FLASH-VENT. REFERENCE FLASH-VENT LAP DETAILS FOR JOINING MATERIALS.

## BASE OF WALL THROUGH WALL FLASHING DETAIL FLASH-VENT STAINLESS STEEL



NOTE: DESIGN TEAM IS RESPONSIBLE FOR DESIGN APPLICATION OF YORK FLASHINGS PRODUCTS AND ACCESSORIES. ALL PRODUCTS SHOULD BE USED IN COMPLIANCE WITH LOCAL BUILDING CODES AND INTERNATIONAL CODES OR STANDARDS. YORK PROVIDES THIS DETAIL AS GUIDANCE ONLY AND ACCEPTS NO LIABILITY FOR THE USE OR DUPLICATION OF THIS DETAIL. THE DESIGN TEAM IS RESPONSIBLE FOR THE DESIGN AND, AT THEIR DISCRETION, SHOULD DETERMINE IF THE RECOMMENDED PRODUCT APPLICATION IS SUITED FOR THE PROJECT AND PERFORMANCE DESIRED. THIS DETAIL IS SUBJECT TO MODIFICATION AT THE MANUFACTURER'S DISCRETION WITHOUT NOTICE. FOR THE MOST RECENT VERSION, PLEASE VISIT [WWW.YORKFLASHINGS.COM](http://WWW.YORKFLASHINGS.COM)