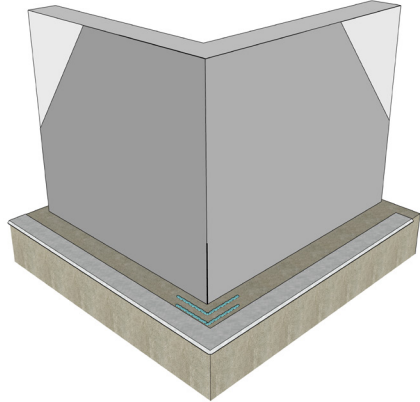
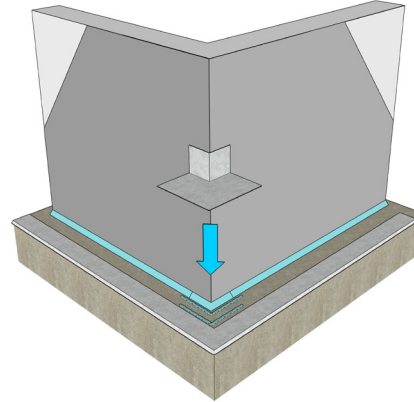


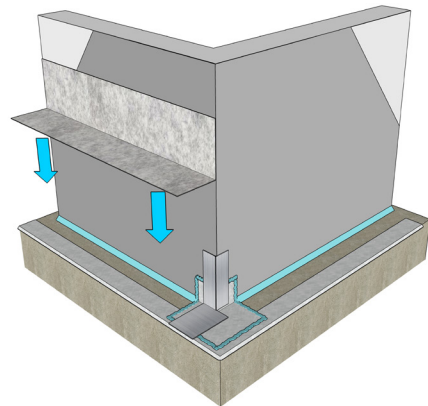
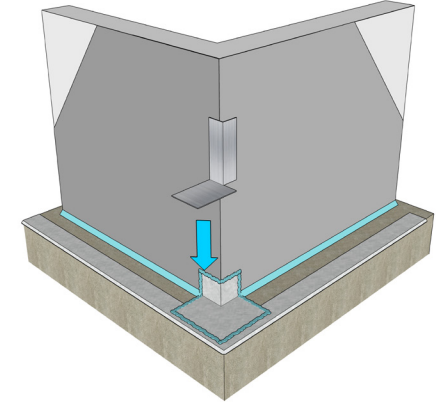
- 1:** APPLY TWO CONTINUOUS ROWS OF US-100 SEALANT ALONG THE EDGE, AND INSTALL STAINLESS STEEL DRIP EDGE ON TOP OF SEALANT. PLACE US-100 SEALANT NEAR CORNER TO RECEIVE PREFORMED OUTSIDE CORNER.



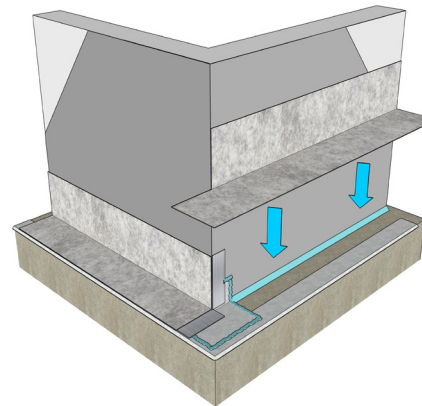
- 2:** PLACE CANT BEAD OF US-100 SEALANT. PLACE PREFORMED OUTSIDE CORNER ON TOP OF US-100 SEALANT BED AND CANT BEAD.



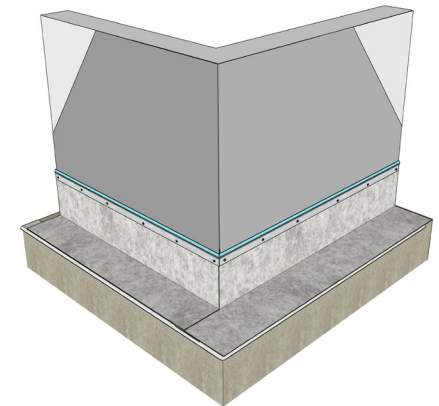
- 3:** SEAL PREFORMED CORNER WITH US-100 SEALANT. APPLY 4" MINIMUM YORK 304 SA SPLICE TAPE O.C. AT LOCATION OF BUTT JOINT.



- 4:** LAY FLASH-VENT SA SS IN PLACE.



- 5:** REMOVE VERTICAL PORTION OF FLASHING TO PROPERLY BUTT THE FLASH-VENT SS TOGETHER. LAY FLASH-VENT COPPER IN PLACE.



- 6:** INSTALL TERM. BAR AND MECHANICALLY FASTEN WITH APPROVED FASTENERS w/ NEOPRENE WASHER @ 8" O.C., AND WITHIN 1" OF EACH END OF BAR. APPLY CONTINUOUS BEAD OF US-100 SEALANT ON TOP OF TERMINATION BAR AND TOOL FOR PROPER ADHESION.

NOTE: FLASH-VENT MUST NOT OVERLAP AT LAPS. JOINING OF DRAINAGE MEMBRANE REQUIRES A 4" MINIMUM SPLICE TAPE AT ALL BUTT JOINTS OF FLASH-VENT. REFERENCE FLASH-VENT LAP DETAILS FOR JOINING OF MATERIALS.

OUTSIDE CORNER WITH DRIP EDGE DETAIL FLASH-VENT SELF-ADHESIVE STAINLESS STEEL

