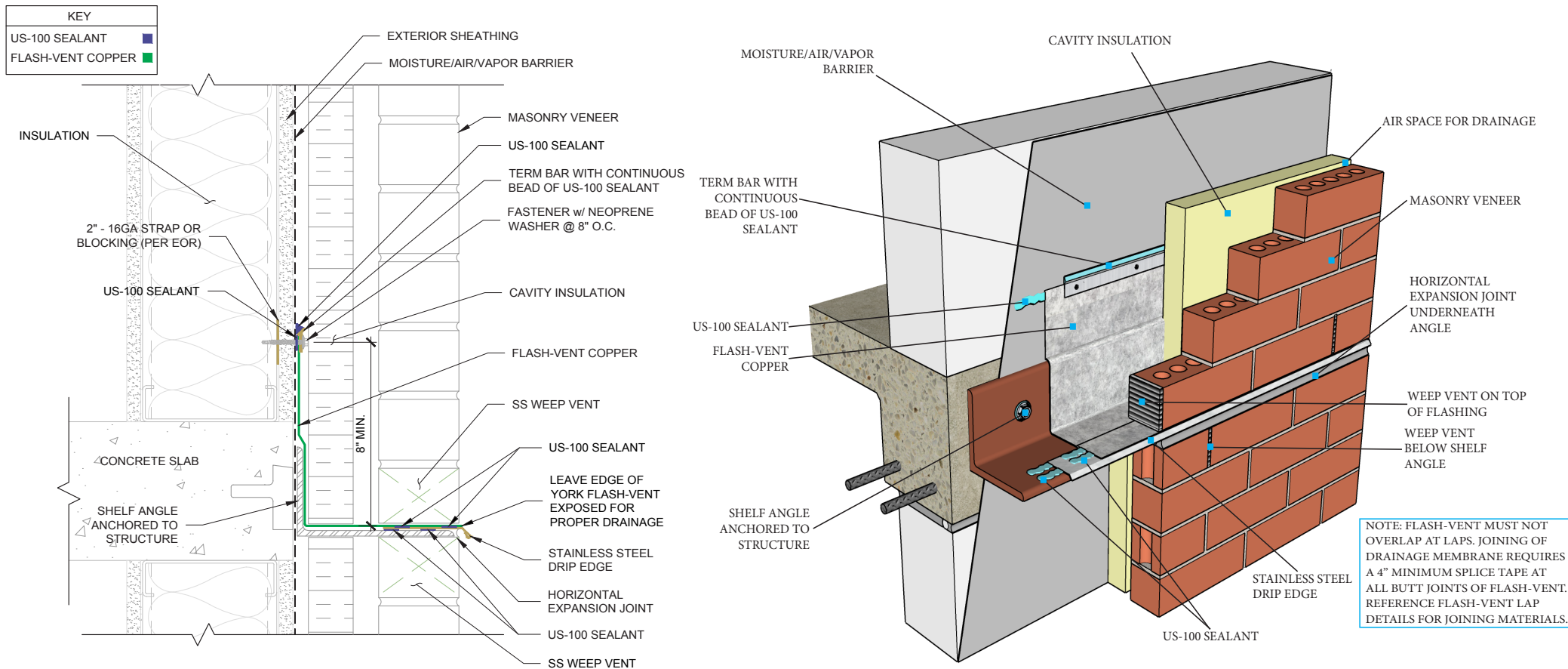
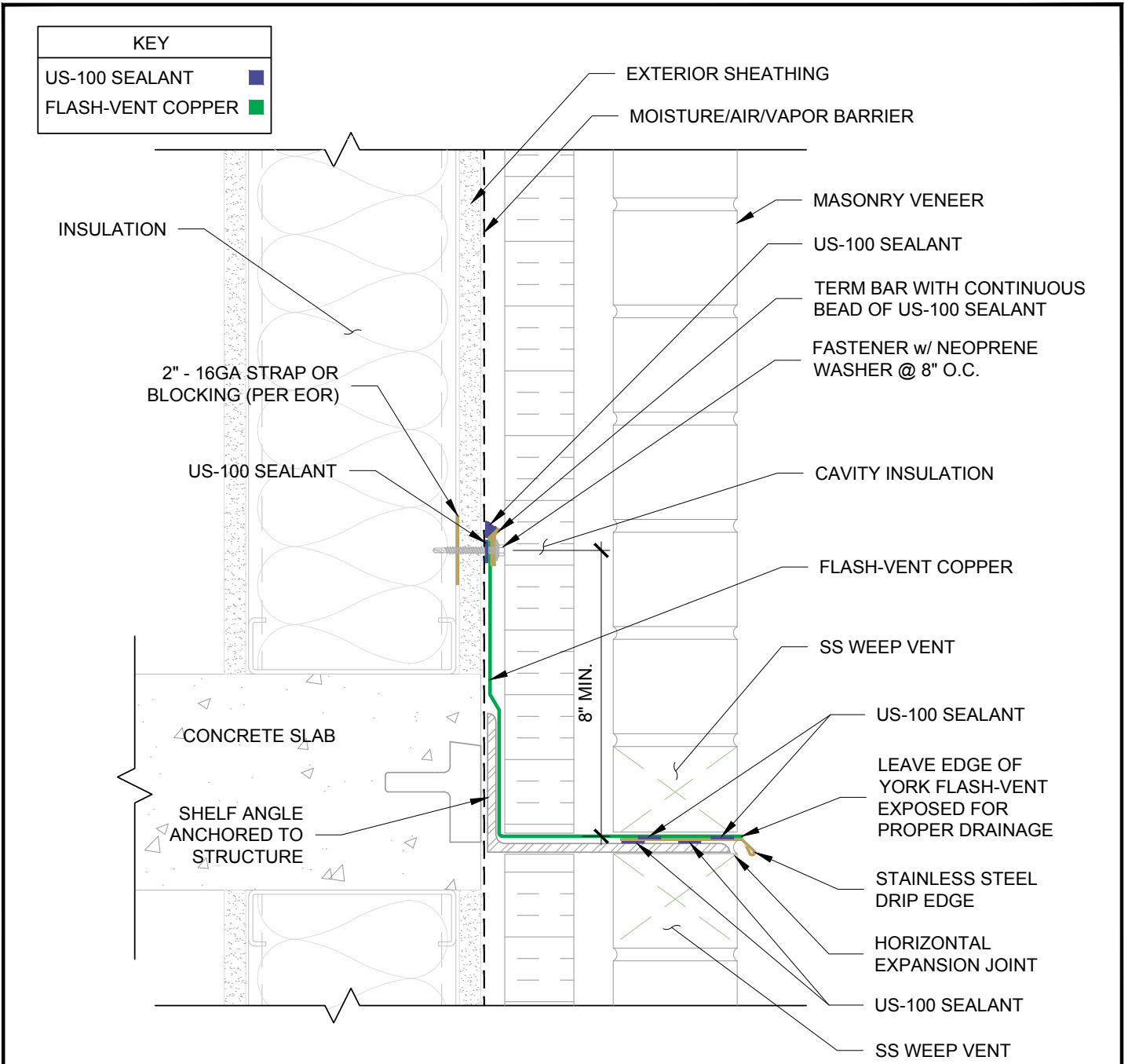


Your Flashing Authority

## Flash-Vent Copper Shelf Angle Details 2D and 3D

© YORK MANUFACTURING INC.  
Reference: FLVC-SA-wDE





1

**SHELF ANGLE DETAIL FLASH-VENT COPPER**

3" = 1'-0"

NOTE: FLASH-VENT MUST NOT OVERLAP AT LAPS. JOINING OF DRAINAGE MEMBRANE REQUIRES A 4" MINIMUM SPLICE TAPE AT ALL BUTT JOINTS OF FLASH-VENT. REFERENCE FLASH-VENT LAP DETAILS FOR JOINING OF MATERIALS.

Design team is responsible for design application of York Flashings products and accessories. All products should be used in compliance with local building codes and international codes or standards. York provides this detail as guidance only and accepts no liability for the use or duplication of this detail. The design team is responsible for the design and, at their discretion, should determine if the recommended product application is suited for the project and performance desired. This detail is subject to modification at the manufacturer's discretion without notice. For the most recent version, please visit [www.yorkflashings.com](http://www.yorkflashings.com).

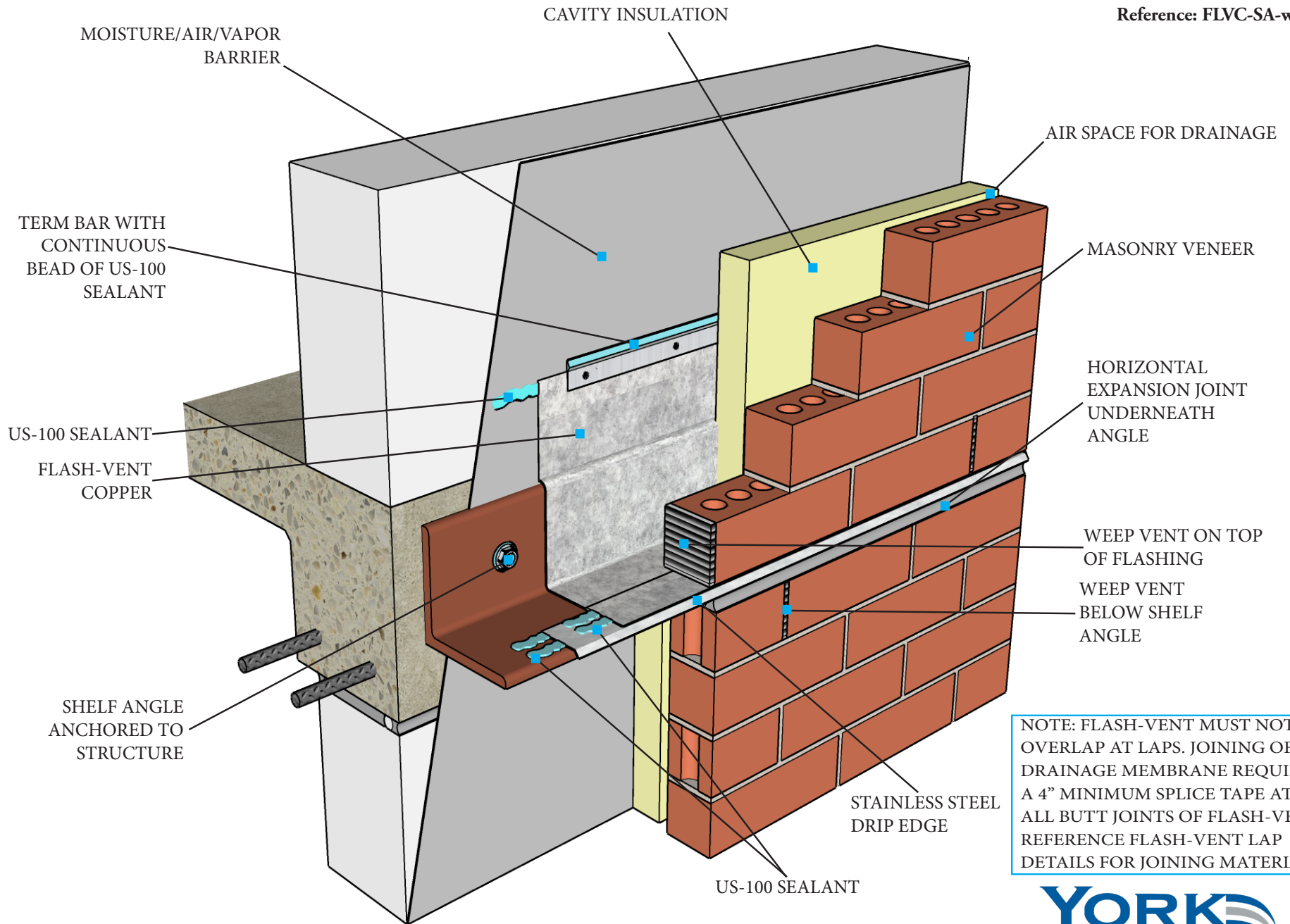
**SHELF ANGLE WITH DRIP EDGE DETAIL - FLASH-VENT COPPER**



DRAWN BY:  
M. Payne

DATE:  
10/29/2025

DRAWING NAME:  
FLVC-SA-WDE-2D



NOTE: FLASH-VENT MUST NOT OVERLAP AT LAPS. JOINING OF DRAINAGE MEMBRANE REQUIRES A 4" MINIMUM SPLICE TAPE AT ALL BUTT JOINTS OF FLASH-VENT. REFERENCE FLASH-VENT LAP DETAILS FOR JOINING MATERIALS.



### SHELF ANGLE WITH DRIP EDGE DETAIL FLASH-VENT STAINLESS STEEL

NOTE: DESIGN TEAM IS RESPONSIBLE FOR DESIGN APPLICATION OF YORK FLASHINGS PRODUCTS AND ACCESSORIES. ALL PRODUCTS SHOULD BE USED IN COMPLIANCE WITH LOCAL BUILDING CODES AND INTERNATIONAL CODES OR STANDARDS. YORK PROVIDES THIS DETAIL AS GUIDANCE ONLY AND ACCEPTS NO LIABILITY FOR THE USE OR DUPLICATION OF THIS DETAIL. THE DESIGN TEAM IS RESPONSIBLE FOR THE DESIGN AND, AT THEIR DISCRETION, SHOULD DETERMINE IF THE RECOMMENDED PRODUCT APPLICATION IS SUITED FOR THE PROJECT AND PERFORMANCE DESIRED. THIS DETAIL IS SUBJECT TO MODIFICATION AT THE MANUFACTURER'S DISCRETION WITHOUT NOTICE. FOR THE MOST RECENT VERSION, PLEASE VISIT [WWW.YORKFLASHINGS.COM](http://WWW.YORKFLASHINGS.COM)